



ECHOMETER 1076 Data

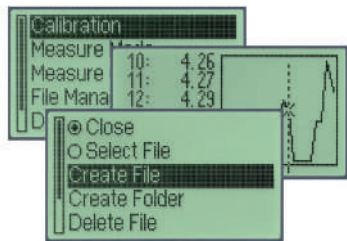
Measurement Of Wall Thickness And Sound Velocity

KARL DEUTSCH

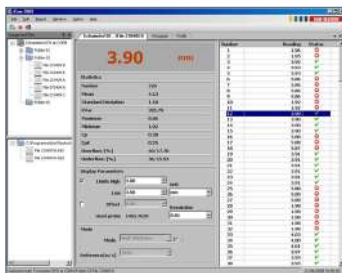
ECHOMETER 1076 Data Innovative Dual Use Instrument



Large, clear graphic display with bright background illumination



User-friendly menu structure and graphical assistance with the representation of readings



The PC software „iCom“ for data transfer from the gauge to the PC makes it easy to administrate and process the measured values. The operating systems supported are Windows 2000/XP (SP3 or higher), Windows Vista and Windows 7/8/8.1/10 (32/64 bit).

The advantages of the ECHOMETER 1076 at a glance

- Measurement of wall thickness and sound velocity with one instrument
- Convenient user-guidance in easy to understand clear text
- Variable display modes for optimum adaptation to the measurement task:
 - Standard display
 - Difference values
 - Minimum value
- Windows-like storage of readings with convenient file management: Folders and files with alpha-numeric designation
- Individual memorization of calibration in the associated files
- Adaptation of sensitivity to the sound damping of different materials
- Graphic representation of the course of readings and quick navigation through the individual readings
- Automatic recognition of probes
- Monitoring of limit values
- Data output to printer and/or PC
- Batteries in standard size AA
- Long battery lifetime
- Sturdy and durable: Shock absorbing protective rubber holster with pop-up stand
- Splash-proof housing according to IP 54



Delivery in a handy carrying case

Assisting Windows software for PC connection via the interface

- “EasyExport” for easy exporting of individual readings or complete files to Windows programs
- “iCom” for data transfer, convenient administration of the whole folder structure and editing of measured values.

Technical Data ECHOMETER 1076 Data

Display	50 mm x 27 mm approx., illuminated		
Measurand	Wall thickness, sound velocity		
Measuring range of wall thickness (measurement uncertainty)	Miniature probe (10 MHz):	0,5 to 25 mm*	(± 0,1 mm)
	Standard probe (4 MHz):	1,2 to 250 mm*	(± 0,1 mm, above 50 mm ± 0,2 %)
	Low frequency probe (2 MHz):	5,0 to 400 mm*	(± 0,2 mm, above 100 mm ± 0,2 %)
Measuring range of sound velocity	100 to 19999 m/s		
Interface	RS232C for printer and PC (PC-USB connection via adapter cable)		
Measurement systems	mm, Inch (selectable)		
Memory	up to 9999 readings, can be structured into files with up to 999 readings each		
Power supply	2 pcs. alkali-manganese batteries (lifetime 130 h min.) or 2 pcs. NiMH rechargeable batteries (lifetime, if new: 65 h min.), type AA/IEC R6 each		
Battery level indicator	Symbol with additional acoustical and optical alarm for low-voltage condition		
Size, weight	131 mm x 81 mm x 32 mm approx., 175 g (with batteries, without protective holster)		

*measuring range stated in mm steel

KARL DEUTSCH Pruef- und Messgeraetebau GmbH + Co KG
Otto-Hausmann-Ring 101 · 42115 Wuppertal · Germany
Phone +49 (202) 7192-0 · Fax +49 (202) 7149 32
info@karldeutsch.de · www.karldeutsch.de

DIN EN ISO
9001
zertifiziert

KARL DEUTSCH